



ICL

GRADUATE BUSINESS SCHOOL

ICL GRADUATE BUSINESS SCHOOL International Prospectus

Outstanding Education!

New Zealand Qualifications Authority
(NZQA) Category 1 Education Provider



2024

WELCOME TO ICL GRADUATE BUSINESS SCHOOL

Welcome to ICL Graduate Business School, where you will receive a quality education within a motivating, guided and healthy learning environment.

Most of our students have one of two objectives: either academic or employment. Some are looking for an internationally recognised qualification at a degree or higher level, or an academic pathway to a Master's at ICL or a University. Others are hoping to work for a while in New Zealand, and if they qualify, settle permanently in this beautiful country of opportunity.

With both academic and employment objectives, a Graduate or Postgraduate Diploma, or a Master's degree from ICL Graduate Business School will help you achieve your ambition.

At ICL, within this traditional yet dynamic environment, we offer the perfect combination of private-sector service standards and the academic guarantee of qualifications approved by the New Zealand government.

Studying in a new country can be both exciting and daunting. The academic and pastoral care services at ICL will help you quickly settle into your studies and support you throughout your stay. We will help you develop learner autonomy and the skills that will enable you to succeed in education or employment in New Zealand.

I look forward to meeting you at ICL Graduate Business School and helping you achieve your goals.



Ewen Mackenzie-Bowie
Chairman



'PRAESENS PRAECELLO'

Through determination I excel

OUR MISSION

To help learners achieve their educational goals and develop learner autonomy by providing high-quality educational programmes within a motivating, guided and healthy learning environment.

OUR VALUES

- Quality
- Integrity
- Collegiality
- Versatility
- Sustainability

TABLE OF CONTENTS

Welcome to ICL Graduate Business School	02
Table of contents	03
Why study abroad?	04
What makes ICL a great place to learn?	05
Living and working in New Zealand	06
Services	07
Programmes	08
Master of Management Level 9	09
Master of Management (Healthcare) Level 9	10
Master of Business Informatics Level 9	11
Master of Business Informatics by Thesis Level 9	12
Postgraduate Diploma in Business Informatics Level 8	13
Postgraduate Diploma in Business Level 8	14
Graduate Diploma in Teaching (ECE) Level 7	15
Graduate Diploma in Business Level 7	16
Bachelor of Business Information Systems	18
New Zealand Diploma in Business Level 6	20
New Zealand Diploma in Business Level 5	21
New Zealand Certificate in English Language NZCEL Level 3, 4 & 5	22
Entry Requirements	23
Enrolment	24
Associate Schools	25

WHY STUDY ABROAD?

New Zealand is a perfect destination for international students to study, live in and have fun. New Zealand has a high standard of living, amazing landscapes, clean air, a healthy lifestyle and quality food and accommodation.

3rd

Auckland: Mercer Quality of Living City World Ranking

Information for Students

During your time in New Zealand, you can gain the skills and experience you need to succeed anywhere in the world. The practical, hands-on learning style gives you a head start in the workforce or a solid foundation for further academic pursuit.

In addition, you can take in the stunning beauty of this country. New Zealand is considered one of the most beautiful countries globally, with breathtaking views of the ocean, lakes, mountains and volcanoes. It's a paradise for outdoor enthusiasts.

Auckland, our largest city, boasts one of the highest quality of living rankings globally, based on climate, ease of communication, and political and social environment, among others. International students have access to a wide range of employment opportunities. Thanks to population growth, investment, and trade, New Zealand's economy is one of the strongest in developed countries.

4th

Most Peaceful Country in the World, Global Peace Index 2023

Information for Parents

Sending your son or daughter to study overseas is a major decision, and we know that safety is a top priority. New Zealand boasts a secure, politically stable society that takes pride in its hospitality and cultural diversity. It has been recognised as one of the most peaceful and least corrupt countries in the world.

Studying in New Zealand presents an opportunity for personal growth and development. It provides students with an immersive and supportive environment to acquire skills necessary for working in a globalised society, such as critical thinking, communication, and teamwork. Furthermore, students will enhance their English proficiency both in and out of the classroom.

It can be challenging to determine which institutes are quality-assured in an unfamiliar country with a different education system. However, in New Zealand, this is not a concern.

7th

UN Human Development Index World Education Ranking

High Education Quality

In 2020, New Zealand Education was ranked 7th in the world according to the United Nations HDI Index. New Zealand was comfortably in the world's top 20 nations for the quality of our schools according to the OECD in 2019.

The New Zealand government has strong quality assurance systems to ensure high-quality education at all levels, both public and private.

Private Training Enterprises (PTE) like ICL Graduate Business School must follow strict quality guidelines monitored by the New Zealand Qualifications Authority (NZQA). ICL Education Group is a member of Quality Tertiary Institutions (QTI).



WHAT MAKES ICL A GREAT PLACE TO LEARN?

ICL Graduate Business School offers practical courses for all levels of study, right through to Master's degrees. You can create your own pathway to reach your goals.



Quality Education

ICL is rated a Category 1 school by NZQA, which is the highest rating possible. NZQA has advised that it is "Highly Confident in ICL's educational performance" and "self-assessment capability" following the latest external evaluation and review, published in September 2022.

ICL keeps a close eye on what employers and prospective students are looking for in Business qualifications. We do regular market research to ensure our programmes are relevant and that they provide graduates with the right knowledge and experiences.

Close Support

Our students learn and develop their skills in small classes where group communication is emphasised. Classes are complemented by online learning: students can study anywhere using our Learning Management System, Canvas.

Further Opportunity

Our Postgraduate Diploma in Business has been recognised by both AUT and Massey universities as a pathway to Master's degrees. Our Graduate Diplomas are also recognised for entry to Master's degrees in New Zealand. Furthermore, our New Zealand Diplomas of Business and Diploma of Information Systems have recognised pathways into undergraduate degrees in either AUT or Massey University or even both.

Employability

Programmes at ICL not only teach theoretical knowledge but also share first-hand experiences from the real world. This real-world perspective may be gained from field trips, visiting industry speakers, and practicums. All our Level 7 to Level 9 programmes qualify international students to work up to 20 hours per week. Successful completion of these programmes also qualifies graduates for 1 to 3 years post-study work visas which allows them to seek long-term employment or even settle down in New Zealand.

Facilities

- Free Wi-Fi
- Cafeteria with barista coffee
- Student kitchen facilities
- Library books
- Access to ProQuest online e-books and journals and Canvas Learning Management System
- Computer laboratories
- ICL has a BYOD policy

Students are welcome to use school facilities from 8 AM to 9 PM every day.



LIVING AND WORKING IN NEW ZEALAND

ICL Graduate Business School provides Accommodation and Welfare support to assist students with accommodation. Students under 18 years of age must stay with an ICL approved homestay or a family member.



Homestay

When you are away from home, living with a host family homestay is an excellent way to learn about New Zealand culture, make friends and practice your English. New Zealand families are kind and friendly, and they enjoy meeting people from other cultures.

Hostel

Hostel-type accommodation can be arranged on request. Our student residence is Rocklands, in Epsom, 20 minutes from ICL by bus.

Flatting

If you prefer to rent an apartment or to find a flatmate, you can find advertisements for flats to rent and roommates on specialised websites and social media.

Living and Working

Living costs can vary depending on your lifestyle. Many services and goods offer student discounts.

Many students would like to work during their studies. As an international student, you can work up to 20 hours per week during the academic year and work full-time during the holidays.

You will need an IRD number if you wish to work in New Zealand. Your IRD number is used for all your taxes, entitlements and personal details that Inland Revenue holds.

It is essential that you work lawfully and sign an employment contract with your employer to protect your own rights. For more information regarding living costs and work rights, please refer to the links below:

www.newzealandnow.govt.nz/living-innz/money-tax/comparable-living-costs

www.immigration.govt.nz

Choosing the right accommodation will impact your New Zealand experience and your time at ICL. You can contact accommodation@icl.ac.nz for more information.



SERVICES

Looking after your well-being is a high priority. Our dedicated First Language support staff (who speak over 10 different languages) are available if you need to talk to someone about any problems, whether relating to ICL or your life outside the School.

Student Services and Pastoral Care

ICL Graduate Business School offers all students personal and emotional support from our dedicated pastoral care coordinator, and from an external qualified counsellor when necessary.

- Personal support (adaptation to local environment and culture, help for everyday life concerns).
- Career Services (assistance with interview skills, job hunting, the New Zealand work environment).
- Attendance monitoring and meeting with students.
- Online visa processing.
- Airport pick up.
- Assistance with CV preparation and cover letters.

All services are available in different languages if the student is not confident or comfortable in English.

Student Welfare

We have safeguards to protect International students' welfare. We have policies and procedures for students at risk and with special needs. We work with the following external organisations and community networks to ensure you a safe and pleasant study experience at ICL.

- Lifeline Auckland (Suicide Prevention)
- Mental Health Foundation NZ
- Chinese Lifeline
- Epilepsy NZ
- Hearts & Minds Mental Health Service
- Latin American Association
- ADHD Association Inc
- Asian Family Services
- Problem Gambling Foundation of NZ

Learning Advice

The School has a dedicated learning advisor to provide comprehensive services to assist students in achieving academic success.

The Learning Advisor:

- Provides academic advisory services to students and lecturers to improve learning outcomes.
- Delivers tutorials to students throughout the year to improve academic literacy, referencing skills and study skills.
- Provide one-on-one support to students.
- Works with administrative staff and lecturers to ensure that students at risk attend support sessions.
- Contributes to the development and implementation of action plans to provide support to students, particularly those at risk.



PROGRAMMES

LEVEL 9

Master of Management

Master of Management
(Healthcare)

Master of Business Informatics

Master of Business Informatics
by Thesis

LEVEL 8

Postgraduate Diploma in
Business Informatics

Postgraduate Diploma in
Business

LEVEL 7

Graduate Diploma in Teaching
(ECE)

Graduate Diploma in Business

Bachelor of Business Information
Systems

LEVEL 6

New Zealand Diploma in
Business

LEVEL 5

New Zealand Diploma in
Business



MM

MASTER OF MANAGEMENT LEVEL 9

16

Months Course

Four 16-week trimesters

180

Credits

Eight 15-credit papers and a 60-credit applied project

6.5

Academic IELTS Requirement

No band lower than 6.0 or any other equivalent in a test recognised by NZQA

The study programme aims to enable students to critically examine theories and practices of management and to conduct applied research so they develop high-level skills and knowledge for leading, managing and transforming organisations within an environment of ubiquitous and continuous change.

Course Overview

The Master of Management builds on previous undergraduate studies either in business/management or related disciplines. You will be equipped to become a practitioner in your specialist field. The Master of Management programme weaves together curriculum threads of leadership and management in both culturally specific and globally relevant contexts, frameworks for understanding and tools for leading organisations undergoing change and how to apply knowledge of research to real business situations.

A specific focus of the programme is developing a bicultural dimension in Aotearoa through an understanding of Māori business and leadership models.

Entry Requirements

- An original bachelor's degree or Graduate Diploma in a business-related subject from a recognised institution, including full transcripts,
- or evidence of acquiring the relevant skills and knowledge through appropriate work or professional experience in business studies or a related area.
- Undergraduate degree in a different discipline with relevant skills and knowledge through professional experience.
- For International students, Academic IELTS with a minimum score of 6.5 overall (with no band score lower than 6.0 and gained within the past two years in one examination), or any other equivalent in a test recognised by NZQA.



BYOD

Students studying this course are required to bring their own laptop.

Papers

LEVEL 8		
8230	Organisational Behaviour	15
8281	Business Professionalism	15
8260	Business Transformation	15
8271	Māori Business Leadership Models	15
8542	Research Methods	15
LEVEL 9		
9201	Global Business	15
9230	Leading and Managing People	15
9203	Project Management	15
9537	Applied Project	60

Graduate Outcomes

- Evaluate and apply advanced contemporary management theories to emerging situations in an organisation.
- Create an internal organisation culture with strong employee engagement, collaboration and teamwork, and ongoing learning and development in the changing environment.
- Analyse, synthesise and communicate information, plans, policies and strategies to enhance business outcomes in an organisation.
- Apply leadership and management to improve business performance within an organisation in Aotearoa New Zealand or internationally.

Employment Outcomes

Many of the skills and knowledge are transferrable across many industries both nationally and globally with the added advantage that graduates bring a level of cross-cultural and international knowledge that is valuable in an export-orientated economy such as Aotearoa New Zealand.

This cultural competence together with an understanding of Māori approaches to business leadership will prepare graduates well for work in or with this country.



MM (HEALTHCARE)

MASTER OF MANAGEMENT (HEALTHCARE) LEVEL 9

Gain expertise aligned with industry standards for success in healthcare management. The MM (Healthcare) aligns with the Australasian College of Health Service Management (ACHSM) Competency Framework, providing essential skills for effective leadership and management in healthcare.

16

Months Course

Four 16-week trimesters

180

Credits

Eight 15-credit papers and a 60-credit applied project

6.5

Academic IELTS Requirement

No band lower than 6.0 or any other equivalent in a test recognised by NZQA

Course Overview

The Master of Management (Healthcare) programme builds upon prior undergraduate studies in business or related fields, or relevant work experience, to cultivate the next generation of managers and leaders in the healthcare industry. Its curriculum aligns with the **Australasian College of Health Service Management (ACHSM) Competency Framework**, guaranteeing the acquisition of relevant and highly sought-after skills in this rapidly expanding industry. The **ACHSM** is a key professional organisation dedicated to excellence in health service management across Australasia. Their framework emphasises leadership, communication, strategic thinking, and ethical governance, shaping standards in Australia and New Zealand. This study programme integrates traditional management and leadership theories with specialised knowledge and skills in healthcare management, addressing both culturally specific and globally relevant contexts. The Master of Management with specialisation in Healthcare is approved by NZQA as qualification ID number 4211-3.

Entry Requirements

- An original bachelor's degree or Graduate Diploma in a business-related subject from a recognised institution, including full transcripts,
- or evidence of acquiring the relevant skills and knowledge through appropriate work or professional experience in business studies or a related area.
- Undergraduate degree in a different discipline with relevant skills and knowledge through professional experience.
- For International students, Academic IELTS with a minimum score of 6.5 overall (with no band score lower than 6.0 and gained within the past two years in one examination), or any other equivalent in a test recognised by NZQA.

Graduate Outcomes

- Evaluate and apply advanced contemporary management theories to emerging situations in an organisation.
- Create an internal organisation culture with strong employee engagement, collaboration and teamwork, and ongoing learning and development in the changing environment.
- Analyse, synthesise and communicate information, plans, policies and strategies to enhance business outcomes in healthcare-related organisations.
- Apply leadership and management to improve business performance within an organisation in Aotearoa New Zealand or internationally.

Papers

LEVEL 8		
8230	Organisational Behaviour	15
8281	Business Professionalism	15
8535	Healthcare Governance and Systems	15
8536	The New Zealand Social and Political Environment in Healthcare Management	15
8200	Accounting for Managers	15
8542	Research Methods	15
LEVEL 9		
9230	Leading and Managing People	15
9203	Project Management	15
9537	Applied Project	60



BYOD

Students studying this course are required to bring their own laptop.



Employment Outcomes

- Care Home Manager
- Facilities Manager
- Practice Manager
- General Manager (Healthcare)
- Business Manager (Medical Centre)
- Care Coordinator
- Property/ Asset Manager (Aged Care Industry)
- Health Care Manager
- Care Home Operations Manager
- Operations Manager (Healthcare)
- Service Development Manager (Health)
- Contracts/ Procurement Manager (Health)

MBI

MASTER OF BUSINESS INFORMATICS LEVEL 9

A cutting-edge 21st-century business degree, honed to add tangible value to enterprises of every kind. Master the arts of business and IT, forging a path of excellence in the ever-evolving landscape of the industry.

16

Months Course

Four 16-week trimester

180

Credits

Nine 15-credit papers and a 45-credit applied project

6.5

Academic IELTS Requirement

No band lower than 6.0 or any other equivalent in a test recognised by NZQA

What is MBI?

Business Informatics is a discipline combining informatics and management innovation and concepts, incorporating service computing and security. It is a cross-disciplinary field that covers science and technology and represents a promising direction for distributed computing and cloud computing methodologies.

ICL is the only tertiary education in New Zealand currently offering the MBI. The MBI programme was created to fill a gap in the industry for a professional with the right blend of skills in IT and Business. Students are ideally positioned upon graduation to find employment.

Entry Requirements

- An original bachelor's degree or Graduate Diploma in informatics or business-related subject from a recognised institution, including full transcripts,
- or evidence of acquiring the relevant skills and knowledge through appropriate work or professional experience in business studies or a related area.
- For international students, academic IELTS with a minimum score of 6.5 overall (with no band score lower than 6.0 and gained within the past 2 years within one examination), or any other equivalent in a test recognized by NZQA.
- A personal statement explaining why you want to study the programme is strongly recommended.



BYOD

Students studying this course are required to bring their own laptop.

Employment Outcomes

- Business Analysts
- Process and Service Managers
- Change Managers
- IT Security Specialists
- IT Entrepreneurs
- Innovation Consultant
- Project Manager
- Information Systems Manager

Papers

LEVEL 8		
8102	Enterprise Systems and Business Analysis	15
8173	Innovation and Design Thinking	15
8273	Enterprise Innovation	15
8151	Information Security Management	15
8150	IT Service Management and Strategy	15
8203	Project Management	15
8260	Digital Transformation	15
8281	Business Professionalism	15
8542	Research Methods	15
LEVEL 9		
9536	Applied Project	45

Graduate Outcomes

MBI graduates will have advanced-level knowledge of the emerging field of business informatics, and be able to apply it in a variety of business roles requiring an ability to manage digital transformation in business settings.

According to NZQA, Master's degree graduates are able to:

- Demonstrate a high order of skills in the planning, execution and completion of a piece of original research or creative scholarly work, and
- Apply such skills learned during the study programme to new situations.



MBI BY THESIS

MASTER OF BUSINESS INFORMATICS BY THESIS LEVEL 9

A forefront business degree with a strong emphasis on research in Business Informatics prepares graduates to add value to both enterprises and research-led organisations. By studying the latest developments in Business Informatics, graduates learn how this field shapes the competitive landscape of industries.

16

Months Course

Four 16-week trimester, one trimester of face-to-face tuition on campus and three trimesters of supervised research work in preparation for completing the thesis

180

Credits

Four 15-credit papers, one 30-credit research proposal, and a 90-credit thesis

6.5

Academic IELTS Requirement

No band lower than 6.0 or any other equivalent in a test recognised by NZQA

What is MBI?

Business Informatics is a discipline combining informatics and management innovation and concepts, incorporating service computing and security. It is a cross-disciplinary field that covers science and technology and represents a promising direction for distributed computing and cloud computing methodologies.

ICL is the only tertiary education in New Zealand currently offering the MBI, a programme created to fill a gap in the industry for a professional with the right blend of skills in IT and Business. Students are ideally positioned upon graduation to find employment. The MBI by Thesis is approved by NZQA as qualification ID number 3749-5.

Entry Requirements

- An original bachelor's degree or Graduate Diploma in informatics or business-related subject from a recognised institution, including full transcripts,
- or evidence of acquiring the relevant skills and knowledge through appropriate work or professional experience in business studies or a related area.
- For international students, academic IELTS with a minimum score of 6.5 overall (with no band score lower than 6.0 and gained within the past 2 years within one examination), or any other equivalent in a test recognized by NZQA.
- A personal statement explaining why you want to study the programme is strongly recommended.

Papers

LEVEL 8		
8151	Information Security Management	15
8150	IT Service Management and Strategy	15
8542	Research Methods	15
8711	Comparing Western and Indigenous Approaches to Research	15
8712	Research Proposal	30
LEVEL 9		
9540	Thesis	90

Graduate Outcomes

MBI graduates will have advanced-level knowledge of the emerging field of business informatics, and be able to apply it in a variety of business roles requiring an ability to manage digital transformation in business settings.

According to NZQA, Master's degree graduates are able to:

- Demonstrate a high order of skills in the planning, execution and completion of a piece of original research or creative scholarly work, and
- Apply such skills learned during the study programme to new situations.



BYOD

Students studying this course are required to bring their own laptop.

Employment Outcomes

- Business Analysts
- Process and Service Managers
- Change Managers
- IT Security Specialists
- IT Entrepreneurs
- Innovation Consultant
- Project Manager
- Information Systems Manager
- Research Analyst (Business Informatics)
- Research Officer
- Product Lead

PGDBI

POSTGRADUATE DIPLOMA IN BUSINESS INFORMATICS LEVEL 8

Study a distinctive blend of Business, Information Systems and Information Technology.

Develop greater depth and advanced-level expertise in an emerging field by gaining a comprehensive understanding of how businesses operate while also learning how to leverage technology to drive innovation and growth.

12

Months Course

Three 16-week trimesters

120

Credits

Eight 15-credit level 8 papers

6.5

Academic IELTS Requirement

No band lower than 6.0 or any other equivalent in a test recognised by NZQA

Course Overview

This unique programme brings together business and IT services in both a New Zealand and global context. The course is designed to create a highly relevant blend of advanced Business Management curriculum.

The PGDBI is designed for graduates with a Bachelor's degree, postgraduate or graduate diploma in a business-related or IT/computing subject from a recognised institution.

It is suited for those seeking to:

- Bridge the gap between a first degree and a career in business informatics that requires further qualifications skills; and
- Build a firm foundation for further advanced level study towards a Master's qualification in a similar discipline.



BYOD

Students studying this course are required to bring their own laptop.

Entry Requirements

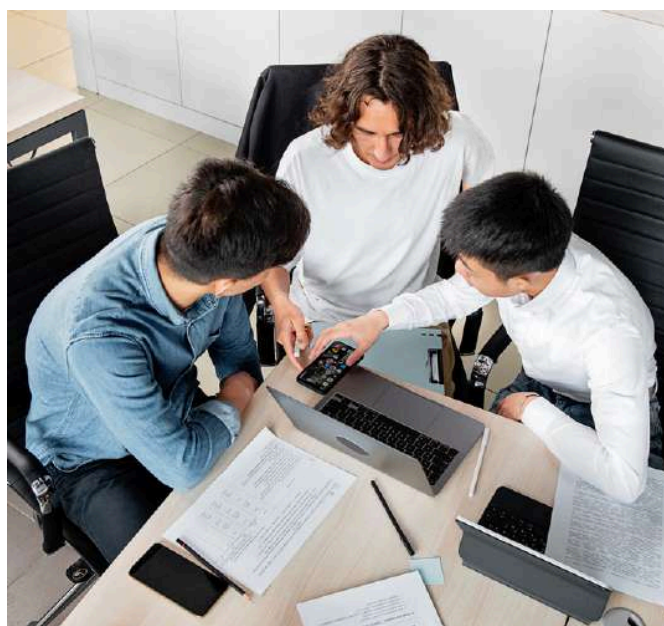
- Bachelor's degree in informatics or a business-related field from a recognised institution or evidence of relevant skills and knowledge from work experience.
- For international students, Academic IELTS with a minimum score of 6.5 overall (with no band score lower than 6.0 and gained within the past 2 years within one examination), or any other equivalent in a test recognized by NZQA.
- A personal statement explaining why you want to study the programme is strongly recommended.

Graduate Outcomes

The PGDBI may provide pathways for further academic study at a Master's level. Graduates may be required to pursue additional study and/or research for provisional or direct entry into a university Master's/Doctoral programme.

Papers

LEVEL 8		
8102	Enterprise Systems and Business Analysis	15
8173	Innovation and Design Thinking	15
8273	Enterprise Innovation	15
8151	Information Security Management	15
8150	IT Service Management and Strategy	15
8203	Project Management	15
8260	Digital Transformation	15
8281	Business Professionalism	15



Employment Outcomes

- ICT Consultant
- Information Analyst
- ICT Project Manager
- Informatics Specialist
- Information Manager
- Information Architect
- Business Solutions Analyst

PGDB

POSTGRADUATE DIPLOMA IN BUSINESS LEVEL 8

12

Months Course

Three 16-week trimesters

120

Credits

Four level 8 papers and four level 9 papers, all 15 credits

6.5

Academic IELTS Requirement

No band lower than 6.0 or any other equivalent in a test recognised by NZQA

Acquire advanced expertise in business professional practices and enhance your theoretical and practical knowledge to apply it effectively in any business context. This programme will equip you with the skills and knowledge necessary to succeed in today's competitive business landscape.

Course Overview

The eight papers in the Postgraduate Diploma were designed by Southern Cross University. They allow students to acquire professional polish across core Business skills including leadership, entrepreneurship, project management and much more.

Entry Requirements

- Bachelor's degree in a business-related field from a recognised institution or evidence of relevant skills and knowledge from work experience.
- For international students, academic IELTS with a minimum score of 6.5 overall (with no band score lower than 6.0 and gained within the past 2 years within one examination), or any other equivalent in a test recognized by NZQA.
- A personal statement explaining why you want to study the programme is strongly recommended.



Papers

LEVEL 8		
8200	Accounting for Manager	15
8241	Marketing	15
8230	Organisational Behaviour	15
8220	Economics and Quantitative Analysis	15
LEVEL 9		
9201	Global Business	15
9202	Entrepreneurship and Marketing	15
9203	Project Management	15
9230	Leading and Management	15



BYOD

Students studying this course are required to bring their own laptop.

Graduate Outcomes

Students with a Postgraduate Diploma are able to:

- Demonstrate advanced knowledge in a specific field of study or professional expertise.
- Engage in rigorous intellectual analysis, criticism and problem-solving.

Employment Outcomes

- Project Manager
- Marketing Executive
- Operations Manager
- HR Manager
- Business Consultant
- Financial Analyst

GDTECE

GRADUATE DIPLOMA IN TEACHING EARLY CHILDHOOD EDUCATION LEVEL 7

12

Months Course

Three 16-week trimesters

135

Credits

Nine 15-credit level 7 papers

7.0

Academic IELTS Requirement

7.0 across all bands or a NZQA / NZ Teaching Council approved equivalent

Course Overview

The Graduate Diploma at level 7 is designed to prepare learners to start their careers as early childhood educators. It can also be a bridging qualification to postgraduate study in ECE teaching or disciplines related to a particular focus, such as children with special needs, Māoritikanga or Pasifika knowledge in ECE. The Graduate Diploma allows graduates to continue with further study to a Master of Education (ECE) degree delivered in a range of NZ and international tertiary institutions and universities.

Entry Requirements

- Completed Bachelor's degree at Level 7 on the NZQF or a recognised equivalent.
- Academic IELTS 7.0 across all bands, or an NZQA/ NZ Teaching Council-approved equivalent.
- Meeting the UE (University Entrance) level literacy and numeracy requirement.
- Meeting New Zealand Police Vetting requirements by the Vulnerable Children's Act 2014.
- Successful selection interview to determine values, disposition and fitness to teach. Before the interview candidates must arrange for two referees to send confidential references directly to ICL



BYOD

Students studying this course are required to bring their own laptop.

Course Information

Students in the Graduate Diploma will complete 9 papers, all of which are at level 7, delivered at a maximum of three papers per trimester.

The course involves both theory and practice of 48 weeks (18 weeks in the classroom and online, 23 weeks in the classroom and concurrent practicum, and 7 weeks block practicum).

Graduate Outcomes

The programme meets the standards as defined by NZQA and the NZ Teaching Council. Graduates will be eligible to gain teacher registration in Aotearoa New Zealand.

The focus of the programme is creating teachers who are able to teach children from 0 to 6 years and providing maturaunga/professional knowledge, whakapono/attitudes, values and beliefs, pukenga/skills and knowledge to become proficient educators and leaders in Aotearoa New Zealand.

Papers

LEVEL 7		
7301	The Holistic Curriculum	15
7302	Te Ao Māori	15
7303	Teaching as Inquiry	15
7304	Professional Practise Rapunga: Conceptualising Professional Practise in ECE	15
7305	ECE: Histories, Philosophies and Theories	15
7306	Human Development: Māori, Pacific and Global Perspectives	15
7307	The Professional Teacher	15
7308	Infant and Toddler Pedagogies	15
7309	Professional Practice Toa: Conceptualising Professional Growth in ECE	15



Employment Outcomes

Most graduates find employment in a range of positions as educators and leaders in the early childhood sector.



The Graduate Diploma is aligned with the values set out by the NZ National Education Priorities. The depiction of the "Nouka" a type of dragon boat, shows elements and values that guide our curriculum. We aim to guide our learners to reach their full potential as future educators and leaders in early childhood education.

GDB

GRADUATE DIPLOMA IN BUSINESS LEVEL 7

12

Months Course

Three 16-week trimester

120

Credits

5 core compulsory papers and
3 specialised papers

6.0

Academic IELTS Requirement

No band lower than 5.5 or any other
equivalent in a test recognised by NZQA

Acquire advanced expertise in business professional practices and enhance your theoretical and practical knowledge to apply it effectively in any business context. This programme will equip you with the skills and knowledge necessary to succeed in today's competitive business landscape.

Course Overview

Students will complete five core compulsory courses that make up the core of the qualification. The remaining three courses will focus on a selected specialist area;

- International Business Innovation
- International Hospitality Management
- International Tourism Management

Entry Requirements

- Bachelor's degree from a recognised institution or evidence of relevant skills and knowledge from work experience.
- For international students, academic IELTS with a minimum score of 6.0 overall (with no band score lower than 5.5 and gained within the past 2 years within one examination), or any other equivalent in a test recognised by NZQA.
- A personal statement explaining why you want to study the programme is strongly recommended.

Papers

LEVEL 6		
6280	International Business	15
6220	Introduction to International Economics	15
6281	Business Ethics	15
LEVEL 7		
7240	International Marketing and Digital Media	15
7280	Inter-Cultural Relations	15



BYOD

Students studying this course are required to bring their own laptop.



WORK PLACEMENT

300 hours of practicum work
(Hospitality and Tourism only)



Graduate Outcomes

Graduates of this programme with its three pathways will have an advanced level of knowledge and skills in international business, tourism management or hospitality management. These attributes equip graduates for a wide variety of business roles in an international environment.

They are ready to pursue a career in the global economy with an awareness of international trade concepts, cultural issues, ethics and the internationalisation of innovation; or of international hospitality or tourism management concepts.

Choose between International Business Innovation, International Hospitality Management or International Tourism Management.

GRADUATE DIPLOMA IN BUSINESS - INTERNATIONAL BUSINESS INNOVATION

The International Business Innovation pathway aims to move beyond traditional entrepreneurship or new venture approaches to innovation and examine innovative techniques and concepts within the international corporate environment. The innovation component of the course in particular requires an ability to think beyond the status quo, to strategically develop, critically evaluate and implement new ideas.

Specialised Papers

LEVEL 7		
7271	Open Innovation	15
7272	Applied Innovation	15
7273	Corporate Innovation: Strategy to Implementation	15

Employment Outcomes

- Strategic Planning Manager
- Business Development Manager
- Key Account Manager
- Infrastructure Advisory Consultant

GRADUATE DIPLOMA IN BUSINESS - INTERNATIONAL HOSPITALITY MANAGEMENT

The International Hospitality Management pathway aims to enable students to gain a deeper understanding of the hospitality industry and its multiple sectors and develop a depth of knowledge on the management issues that occur within the industry. The Industry Practicum and Research Project provides students with a hands-on immersion in the hospitality industry, allowing them to apply their learning, test the relevance of academic theories and reflect critically on the relationship between their academic study and industry practice.

Specialised Papers

LEVEL 7		
7281	Mindful Management	15
7301	International Hospitality Management in Context	15
7501	Industry Practicum and Research Projects	15

Employment Outcomes

- A variety of roles in Hospitality
- Food and Beverage Manager
- Restaurant Manager
- Events Operations Manager

GRADUATE DIPLOMA IN BUSINESS - INTERNATIONAL TOURISM MANAGEMENT

The International Tourism Management pathway aims to enable students to gain a deeper understanding of the tourism industry and its array of sectors. Students will develop a depth of knowledge of the management issues that occur within the industry. The Industry Practicum and Research Project provides students with a hands-on immersion in the tourism industry, allowing them to practically apply their learning, test the relevance of academic theories and reflect critically on the relationship between their academic study and industry practice.

Specialised Papers

LEVEL 7		
7281	Mindful Management	15
7401	International Tourism Management in Context	15
7501	Industry Practicum and Research Projects	15

Employment Outcomes

- Tourism Manager
- Client Experience Manager
- Experience and Brand Manager
- Community Development Manager

BBIS

BACHELOR OF BUSINESS INFORMATION SYSTEMS LEVEL 7

The Bachelor of Business Information Systems aims to produce work-ready professionals with a blend of business and information systems skills, emphasising technical proficiency, core business insights, ethical data application, critical thinking, and interdisciplinary study to drive organisational success in New Zealand and globally.

24

Months Course

Six 16-week trimester

360

Credits

Information Systems 105 credits
Business 120 credits,
ICT 90 credits
Research and application 45 credits

6.0

Academic IELTS Requirement

No band lower than 5.5 or any other equivalent in a test recognised by NZQA

Course Overview

The course spans the workload of three academic years condensed into 24 months. Students will explore both business and information systems papers, culminating in a hands-on project aligned with industry needs in the final term of study.

Entry Requirements

- A qualification that is recognised as the New Zealand University Entrance (UE) with minimum of 14 credits at NCEA Level 3 in three different approved subjects, 10 credits at NCEA Level 2 in English, and 10 credits at NCEA Level 1 in Mathematics, or
- An alternative secondary school qualification (Ad Eundem Statum) that is deemed equivalent to the UE.
- For international students, academic IELTS with a minimum score of 6.0 overall (with no band score lower than 5.5 and gained within the past 2 years within one examination), or any other equivalent in a test recognised by NZQA.

Graduate Outcomes

Graduates of the Bachelor of Business Information Systems will be able to:

- Apply business knowledge, business management and research skills to identify and solve problems within small businesses to organisations in Aotearoa New Zealand and globally.
- Apply project management knowledge and skills to define and implement technical and process solutions and integrate systems within and across organisations.
- Evaluate, design, implement, and utilise systems to improve the efficiency and effectiveness of core business operations.
- Demonstrate an appropriate balance of knowledge about organisations, ethical issues, people management, collaboration, communication, technical and problem-solving skills in professional practice.
- Apply knowledge of information systems and technologies to help individuals, groups and organisations achieve their goals within a competitive global environment.

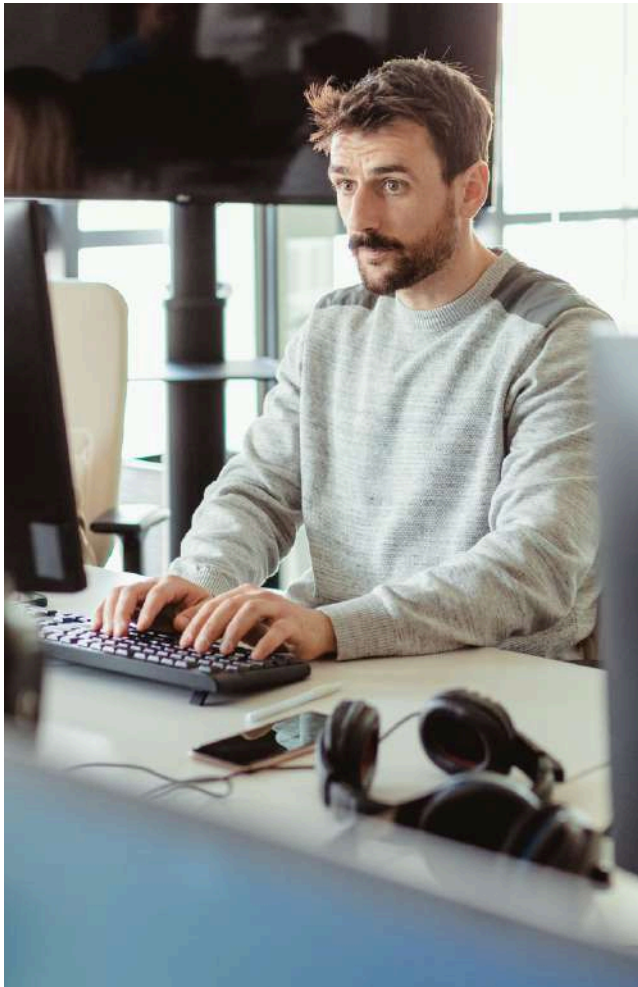


BBIS

BACHELOR OF BUSINESS INFORMATION SYSTEMS LEVEL 7

Employment Outcomes

- Database Administrator
- Information Systems Manager
- Business Analyst
- IT Project Manager
- IT Consultant
- Programmer and Designer
- Data Modeller
- Electronic Commerce Administrator
- Application Analyst
- Cybersecurity Analyst
- Systems developer
- Project Manager
- IT Technical Support



Papers

LEVEL 5		
5101	Introduction to Object-Oriented Programming	15
5102	Intermediate Object-Oriented Programming	15
5103	Discrete Mathematics	15
5140	Information Systems	15
5143	Introductory Statistics for Business Management	15
5200	Business Fundamentals	15
5201	Professional Practice and Communication in Business	15
5210	Managing Business Operations	15
5213	New Zealand Business Environment	15

LEVEL 6		
6101	Ethics for the Information Systems Professional	15
6104	Database Management Systems	15
6105	Web Design and Development	15
6106	Information Security Management	15
6200	Strategic Business Planning	15
6203	Business Process Management	15
6209	Integrated Project Management	15
6213	Planning and Managing Business Finances	15
6501	Applied Business Research	15

LEVEL 7		
7101	Business Intelligence and Analytics	15
7102	Data Mining and Knowledge Discovery	15
7103	Software Requirements Analysis	15
7241	The Digital and Social Media Landscape	15
7502	Applied Project	30



BYOD

Students studying this course are required to bring their own laptop.

NZDB

NEW ZEALAND DIPLOMA IN BUSINESS LEVEL 6

Study an up-to-date, practical business qualification that will equip you for roles in strategic management and leadership. You will gain a solid understanding of management principles, as well as essential leadership skills that are crucial for success in today's business landscape.

8

Months Course

Two 16-week trimester

120

Credits

Eight 15-credit level 6 papers

6.0

Academic IELTS Requirement

No band lower than 5.5 or any other equivalent in a test recognised by NZQA

Course Overview

The purpose of the NZDB (Level 6) is to equip graduates with skills, attitudes and values that form the crux of leadership and management functions in dynamic and constantly changing business environments. It provides opportunities for learners to interact in real or realistic business environments and emerge as graduates in an ever-changing business world.

Each paper is taught through one four-hour class per week, with an additional four-hour Workshop to support learning and achievement, totalling 20 hours of in-class learning time per week for each student. Classes are normally scheduled over three or four days per week.

Entry Requirements

- Completion of NZDB level 5.
- For international students, academic IELTS with a minimum score of 6.0 overall (with no band score lower than 5.5 and gained within the past 2 years within one examination), or any other equivalent in a test recognised by NZQA.

Papers

LEVEL 6		
6200	Strategic Business Planning	15
6201	Facilitating Business Innovation and Change	15
6202	Managing Business Environmental Factors	15
6210	Applied Leadership and Management	15
6211	Leadership for Business Resources	15
6212	Managing Business Resources	15
6213	Planning and Managing Business Finances	15
6214	Leading and Managing Projects	15

Employment Outcomes

- Small Business Entrepreneur
- HR Manager
- Business Manager
- Operations Manager in a wide range of sectors



BYOD

Students studying this course are required to bring their own laptop.



NZDB

NEW ZEALAND DIPLOMA IN BUSINESS LEVEL 5

8

Months Course

Two 16-week trimester

120

Credits

Eight 15-credit level 5 papers

5.5

Academic IELTS Requirement

No band lower than 5.0 or any other equivalent in a test recognised by NZQA

Study an up-to-date, practical business qualification that will equip you for roles in strategic management and leadership. You will gain a solid understanding of management principles, as well as essential leadership skills that are crucial for success in today's business landscape.

Course Overview

The New Zealand Diploma in Business (Level 5) aims to equip graduates with knowledge, essential business skills, attitudes and values underpinning key leadership and management functions in business environments.

Entry Requirements

- High School Graduation Certificate.
- High School Academic Transcript
- For international students, academic IELTS with a minimum score of 5.5 overall (with no band score lower than 5.0 and gained within the past 2 years within one examination), or any other equivalent in a test recognised by NZQA.

Graduate Outcomes

Graduates will benefit New Zealand businesses by contributing to the achievement of their strategic objectives. Graduates will ethically apply the knowledge and skills, in a bi and multi-cultural environment.

Employment Outcomes

- Customer Services Manager
- Administrator
- Business Coordinator
- Facilities Manager
- Operations Manager
- Business Manager in a wide range of sectors.



BYOD

Students studying this course are required to bring their own laptop.

Papers

LEVEL 5		
5200	Business Fundamentals	15
5201	Professional Practice and Communication in Business	15
5202	Contributing to Business Innovation and Change	15
5210	Managing Business Operations	15
5211	Business Planning	15
5212	Leading Business Activities and Change	15
5213	New Zealand Business Environment	15
5214	Managing Projects	15



NZCEL

NEW ZEALAND CERTIFICATE IN ENGLISH LANGUAGE LEVEL 3, 4 & 5



Bridge International College was established in 2000 and it is an NZQA Category 1 school and a proud member of English New Zealand.

If you are preparing for tertiary studies, you can study a New Zealand Certificate in English Language (NZCEL) offered by **Bridge International College**, an ICL Education Group member, located in the same building as ICL Graduate Business School.

Graduate Outcomes

- Graduates of this qualification will be able to:
- Understand the main ideas and supporting details of moderately complex oral academic texts.
- Participate effectively in sustained spoken academic discourse.
- Understand the main ideas and supporting details of moderately complex written academic texts.
- Write detailed, developed, moderately complex texts.

Entry Requirements Level 3

- Be at least 16 years of age.
- Produce evidence of proficiency in English equivalent to a Common European Framework of Reference (CEFR) B1 High level. This may be demonstrated via a recognised English language testing system such as IELTS, Cambridge, TOEFL, and achievement in the New Zealand Certificate of English Language (L2).
- Possess the appropriate student visa.

Entry Requirements Level 4

- Be at least 16 years of age.
- Produce evidence of proficiency in English equivalent to a Common European Framework of Reference (CEFR) B2 Low level. This may be demonstrated via a recognised English language testing system such as IELTS, Cambridge, TOEFL, achievement in the New Zealand Certificate of English Language (L3).
- Possess the appropriate student visa.

Entry Requirements Level 5

- Be at least 16 years of age.
- Produce evidence of proficiency in English equivalent to a Common European Framework of Reference (CEFR) B2 Mid level. This may be demonstrated via a recognised English language testing system such as IELTS, Cambridge, TOEFL, and achievement in the New Zealand Certificate of English Language (L4).
- Possess the appropriate student visa.

Where a prospective student for the NZCEL L3, L4 or L5 programmes cannot produce evidence of current English proficiency, Bridge will use its own Internal English Proficiency Test (IEPT) to assess and determine the student's entry-level.

Outcomes

- Improve your writing of academic essays to include a well-structured introduction thesis statement and conclusion, and the development of ideas in main paragraphs to follow a line of reasoning.
- Instruct you on how to write an academic report which includes headings, general and main findings, and recommendations.
- Extend your knowledge of academic vocabulary and improve your ability to use appropriate words in context.
- Develop intensive reading and listening skills for deeper comprehension of academic texts.
- Enable you to participate in academic discussions by developing your speaking skills and the ability to present an argument.
- Encourage you to use critical thinking skills to analyse information and form your own opinions.
- Show you how to reference academic sources by analysing types of citations and the use of paraphrasing.
- Guide you towards resources and strategies for self-study to assist you in becoming a more independent learner.
- Assist you in developing strategies for taking a variety of academic exams.



ENTRY REQUIREMENTS

The indicated IELTS scores in the following chart are overall Academic IELTS scores. Please check each course page to ensure that you meet the minimum band score.

Business

LEVEL	PROGRAMME	IELTS	ACADEMIC ENTRY REQUIREMENTS	OTHER REQUIREMENTS
9	Master of Management	6.5	Bachelor's degree or Graduate Diploma in a business/management subject or evidence of relevant skills/knowledge from work experience.	Personal statement explaining why you want to study the course is strongly recommended.
9	Master of Business Informatics	6.5	Bachelor's degree or Graduate Diploma in a business/IT/computing subject or evidence of relevant skills/knowledge from work experience.	Personal statement explaining why you want to study the course is strongly recommended.
8	Postgraduate Diploma in Business Informatics	6.5	Bachelor's degree or Graduate Diploma in a business/IT/computing subject or evidence of relevant skills/knowledge from work experience.	Personal statement explaining why you want to study the course is strongly recommended.
8	Postgraduate Diploma in Business	6.5	Bachelor's degree or Graduate Diploma in a business-related field.	Personal statement explaining why you want to study the course is strongly recommended.
7	Graduate Diploma in Business	6.0	Bachelor's degree from a recognised institution or evidence of relevant skills and knowledge from work experience.	Personal statement explaining why you want to study the course is strongly recommended.
7	Bachelor of Business Information Systems	6.0	A qualification that is recognised as the New Zealand University Entrance (UE) with minimum 14 credits at NCEA Level 3 in three different approved subjects, 10 credits at NCEA Level 2 in English, and 10 credits at NCEA Level 1 in Mathematics, or an alternative secondary school qualification (Ad Eundem Statum) that is deemed equivalent to the UE.	
6	New Zealand Diploma in Business	6.0	Completion of NZDB level 5.	
5	New Zealand Diploma in Business	5.5	High School Graduation.	

ECE Early Childhood Education

LEVEL	PROGRAMME	IELTS	ACADEMIC ENTRY REQUIREMENTS	OTHER REQUIREMENTS
7	Graduate Diploma in Teaching Early Childhood Education	7.0 all bands	Completion of Bachelor degree at level 7 on NZQF or equivalent.	Two written references, police check, literacy & numeracy test, and ECE Panel Interview.

NZCEL New Zealand Certificate in English Language

LEVEL	PROGRAMME	IELTS	ACADEMIC ENTRY REQUIREMENTS	OTHER REQUIREMENTS
3	New Zealand Certificate in English Language	5.0	Evidence of proficiency in English equivalent to a Common European Framework of Reference (CEFR) B1 High level*.	<ul style="list-style-type: none"> Be at least 16 years of age. Possess the appropriate student visa.
4	New Zealand Certificate in English Language	5.5	Evidence of proficiency in English equivalent to a Common European Framework of Reference (CEFR) B2 Low level*.	<ul style="list-style-type: none"> Be at least 16 years of age. Possess the appropriate student visa.
5	New Zealand Certificate in English Language	6.0	Evidence of proficiency in English equivalent to a Common European Framework of Reference (CEFR) B2 Mid level*.	<ul style="list-style-type: none"> Be at least 16 years of age. Possess the appropriate student visa.

*This may be demonstrated via a recognised English language testing system such as IELTS, PTE, Cambridge, TOEFL, achievement in the New Zealand Certificate of English Language Level 2, 3 or 4 for the relevant program.

ENROLMENT

Studying at ICL in New Zealand is an exciting journey that requires planning ahead. You can apply directly to ICL or through an ICL registered retailer. We recommend you submit your application at least three months before your course starts.

You may need the following items to apply:

- A copy of an English language test such as Academic IELTS, PTE, TOEFL, NZCEL or recognised equivalent. *Note that these results are valid for only two years from the exam date.
- Copies of academic documents and certified translations of all relevant documents that are not in English (transcripts as well as award certificates).
- Evidence of relevant work experience (including references).

You can easily apply online via the online application section on our website. Please complete the International Student ICL Application Form. Do not forget to make sure all sections are completed in full, and that you have indicated the programme and major of your choice.

If you have any problem with your online application or any other questions, please feel free to send an email to info@icl.ac.nz and our dedicated staff will assist you through the whole process.

Or you can mail your application to us:

Mail to: PO Box 293, Shortland Street, Auckland, 1010, New Zealand.

Courier to: 10-14 Lorne Street, City Central, Auckland

Pre-departure Checklist

- 1 Organise your visa. Visit www.immigration.govt.nz (quick links - office & fees finder) to find the nearest INZ facility.
- 2 Make sure your passport is valid for your intended length of study in NZ.
- 3 Arrange accommodation before your arrival through ICL's accommodation service, or your retailer or someone you can trust (e.g. a family member) in Auckland.
- 4 Pack a document folder containing your Offer of Place Letter, academic transcripts from previous studies, identification documents, etc.
- 5 Organise to have at least NZD 300.00 cash available for your arrival in Auckland.
- 6 Have a medical, optical and dental check-up and organise any prescribed medicine required.
- 7 Write down the contact details of your country's embassy in New Zealand.
- 8 Write down the number of ICL's emergency contact number for international students +64 (0)21 780 793



ASSOCIATE SCHOOLS

ICL Graduate Business School is a part of ICL Education Group which oversees three other schools: Auckland English Academy, Bridge International College and New Horizon College.

All of our schools are NZQA Category 1 Schools, the highest ranking that can be given by the New Zealand Qualifications Authority (NZQA).



Located in central Auckland City, AEA is a 10-minute walk away from Auckland's famous eateries, arcades, stores and sights. With devoted support from our specialised teachers and our excellent learning facilities, AEA is the perfect hub for the ideal student experience.

At AEA, we understand that every student is unique. We believe that success in learning English comes from understanding your needs and providing classes that are motivating, supportive and enjoyable. And, of course, by providing excellent teachers. AEA students come from all over the world to learn English, experience our teaching and prepare for their English language exams. You will be welcomed by fellow students and fully supported by staff. We can't wait to see you in class!

As part of ICL Education Group, we provide our students with the opportunity to continue their studies within the partnering schools.



Bridge International College focuses on English for Academic Purposes. We deliver the New Zealand Certificate of English Language (NZCEL) levels 3, 4 and 5. 16-week programmes which prepare students for entry into academic programmes.

- Level 3 prepares for entry to Level 4 programmes.
- Level 4 prepares for entry to Level 6 and 7 diplomas and degrees.
- Level 5 prepares students for entry to postgraduate diplomas and Master's degrees.

We teach academic skills including essay and report writing, vocabulary development, reading and listening skills in academic contexts, critical thinking skills, referencing and exam techniques.

Bridge shares all the student resources of the ICL Education Centre, including the library, cafeteria, computer and Wi-Fi facilities and the full support of the student welfare team.

Bridge International College is part of ICL Education Group, which allows our students to continue their studies within the partnering schools.



Our teaching is based on modern communicative methods of learning English and how our qualified and experienced teachers encourage all the students to be actively involved in class activities. Our teachers take a keen interest in all students and provide a stimulating learning experience. Students who enjoy interacting with their teacher and other students in a warm, friendly class atmosphere will like learning English at New Horizon. New Horizon is a Category 1 school, which means it has the best education quality in New Zealand. It also allows students to work up to 20 hours per week as long as they enrol in a course of at least 14 weeks.

New Horizon College is part of ICL Education Group, which allows our students to continue their studies within the partnering schools.



ICL Education Centre
10-14 Lorne Street, Auckland
+64 27 287 9663
icl.ac.nz



ICL Education Centre
10-14 Lorne Street, Auckland
+64 27 287 9663
english.co.nz

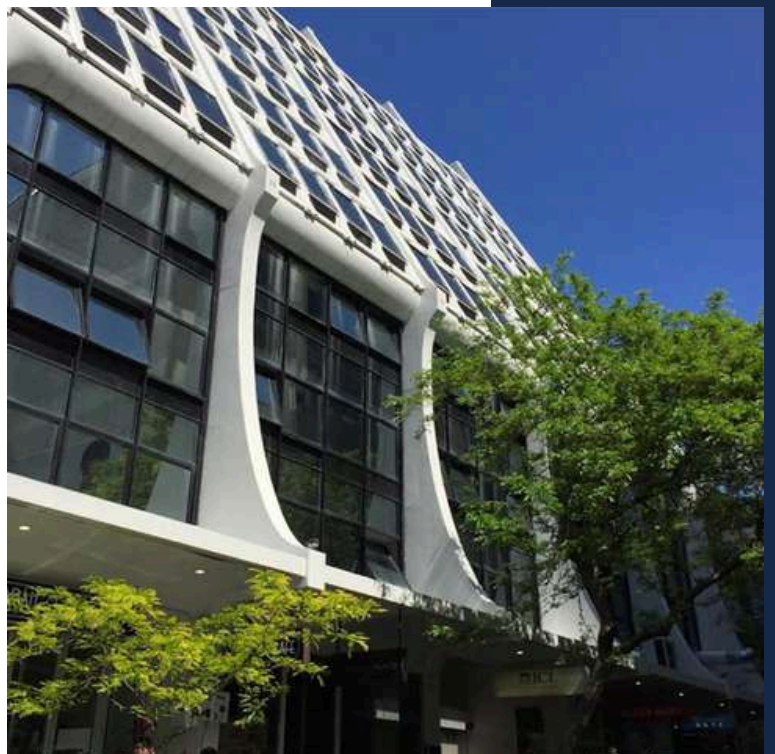


ICL Education Centre
10-14 Lorne Street, Auckland
+64 27 287 9663
bridge.ac.nz



info@icl.ac.nz
+64 27 287 9663
newhorizon.ac.nz

*Outstanding
Education!*



ICL reserves the right to alter programmes, curricula and terms and conditions without notice, before or after student admission. At the time of printing November (2023) every attempt was made to present information accurately in this prospectus, however ICL accepts no liability for any errors made.
ICL Graduate Business School is a NZQA Category 1 School